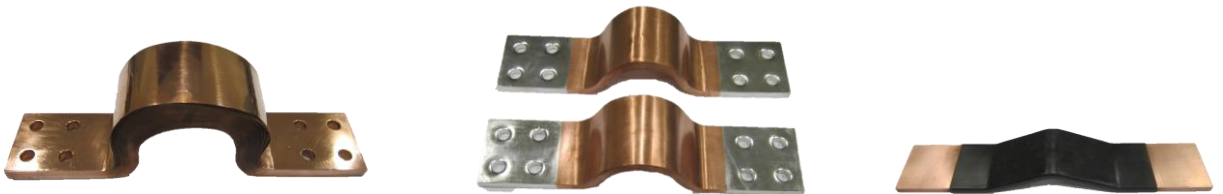




**HORNG YU ELECTRIC CO., LTD.**

## Flexible Copper Connector



## Features

**Conductivity above 99.9%**

**Shock Absorption**

**Flexible**

**Suitable for acid and alkali condition**

## Application

**Transformer and Generator lead to Terminal**

**Busway and DC Device lead to Terminal**

**Movable parts of switch, Spot welder, and Furnace**

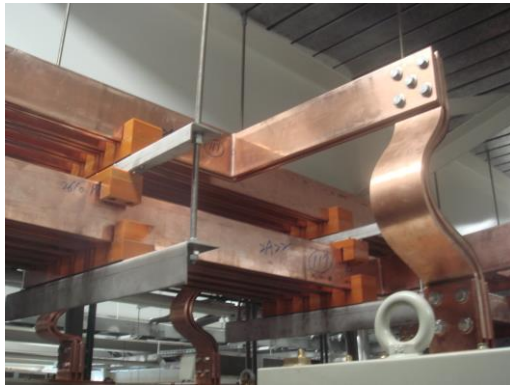
**Circuit in narrow Space**

**For the electric vibration equipment**



**HONG YU ELECTRIC CO., LTD.**

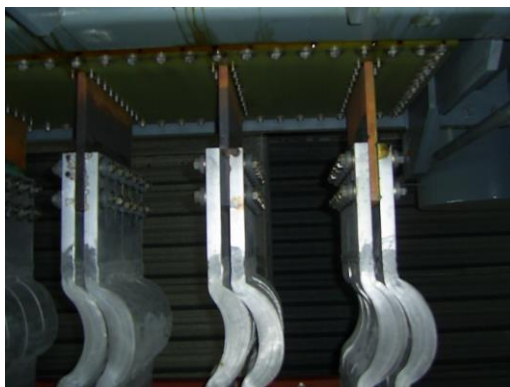
**Product pictures**



**Transformer lead to Terminal**



**For the electric vibration equipment**



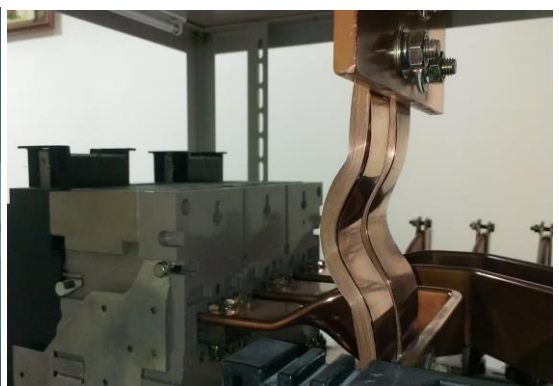
**Bus Way lead to Terminal**



**DC Device lead to Terminal**



**Movable parts of switch**

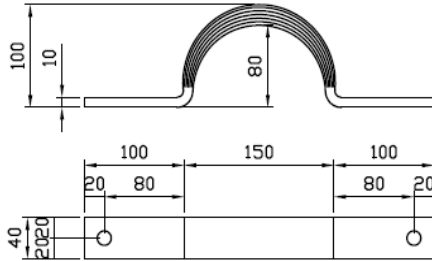


**Bridging position offset adjustment**

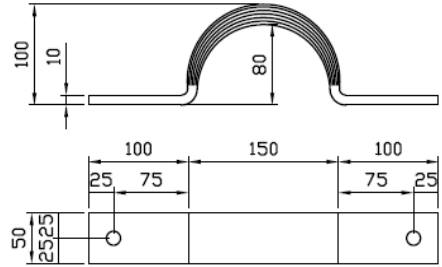


**Specification**

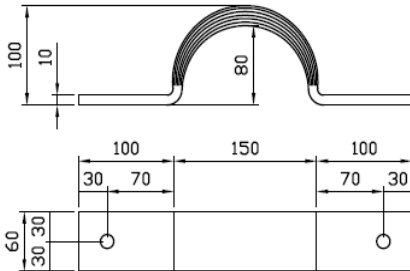
**Standard Specification**



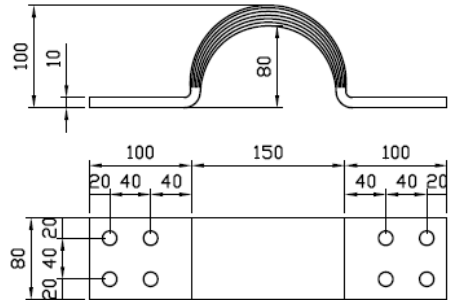
TYPE : T350			
Rate current	Thickness	Width	Hole diameter
1050 A	10 mm	40 mm	14Φ



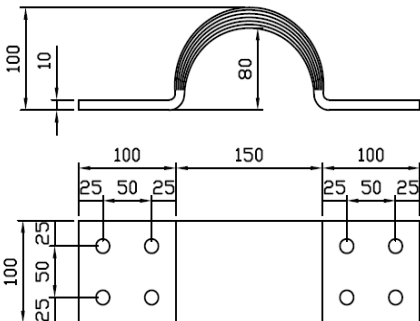
TYPE : U350			
Rate current	Thickness	Width	Hole diameter
1300 A	10 mm	50 mm	14Φ



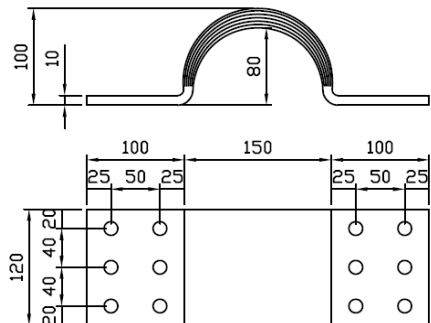
TYPE : V350			
Rate current	Thickness	Width	Hole diameter
1500 A	10 mm	60 mm	14Φ



TYPE : W350			
Rate current	Thickness	Width	Hole diameter
1640 A	10 mm	80 mm	14Φ



TYPE : X350			
Rate current	Thickness	Width	Hole diameter
2040 A	10 mm	100 mm	14Φ



TYPE : Y350			
Rate current	Thickness	Width	Hole diameter
2200 A	10 mm	120 mm	14Φ

**\*Note : Stretching length is 30—40mm.**

**Standard Welding Length is 100 mm, customized service is available.**